

Quarterly Connection

A NIBS Member Newsletter

Topics Inside

Page 1-2	Feature Story
Page 2	Digital Twins Webinars
Page 3	Built Environment Workforce
Page 3	Dodge Survey
Page 4-5	Columns
Page 6	Observances and Events
Page 7	Find Us Online



Feature Story

Building Innovation 2025 Schedule Released

NIBS recently released the [schedule](#) for the annual Building Innovation conference, which will take place May 19-21 at The Ritz-Carlton, Tysons Corner in McLean, VA.

Education sessions will discuss strategies for resilient communities and be centered around three main tracks: Leaders, Practitioners, and Technologists.

Programming will begin on Monday, May 19 with a welcome reception at 5 PM. Experts from across the built environment are welcome to come connect and learn. Education sessions begin the following day after an opening keynote and scholarship presentation. Attendees will be eligible to earn continuing education credits and certificates of attendance.

Our keynote speaker will be the Honorable Garrett Graves. In 2008, Louisiana Governor Bobby Jindal appointed Graves chairman of the Louisiana Coastal Protection and Restoration Authority. In this position, Graves created a \$50 billion, 50-year master plan to promote coastal restoration and improve hurricane protection. He was a member of the United States House of Representatives, representing Louisiana's 6th Congressional District from January 2015-January 2025.

[Register to attend!](#)

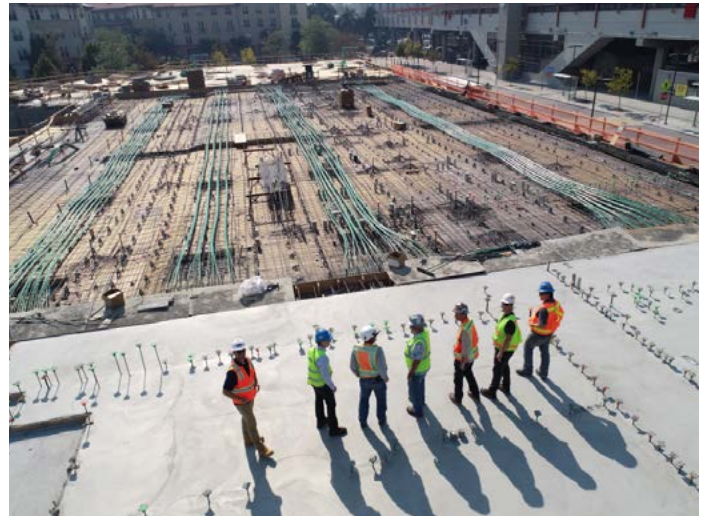
This year's theme is Thrive: Strategies for Resilient Communities.

Digital Twins Webinars

Digital Twins Webinars Continue Conversations from Emerging Technologies Series

After the success of the [Emerging Technologies Series Digital Twins 2024](#) event last December, NIBS is continuing the conversation around digital twins with the [Building Innovation webinar series](#).

In these sessions, expert speakers will discuss topics like cognitive digital twins, artificial intelligence, asset definitions, spatial computing, and more.



Built Environment Workforce

Built Environment Faces Workforce Challenges

The ongoing workforce shortage in the building industry has reached the level of a national security issue. NIBS is partnering with leading industry experts and thought leaders to drive awareness to these challenges and develop solutions.

NIBS Hosted Virtual Women Executives in Building Event

In the latest session of the Women Executives in Building Symposium, NIBS Board Treasurer Sandra Benson and board member Nancy Novak hosted a [virtual session](#) on the future of work.

This discussion highlighted today's emerging technology tools – AI, automation, and data analytics – and how they are shaping the business landscape. The conversation emphasized the importance of women leaders understanding and leveraging these tools to stay competitive.

Dodge Hosts Webinar on Construction Workforce

Only 7% of U.S. students and job-seekers actively seek work in the construction industry, according to a new study conducted by Dodge Construction Network.

Despite this, the study also reveals there are several opportunities to increase that share. In [this webinar](#), Donna Laquidara-Carr, Industry Insights Research Director with Dodge, will discuss key findings from the study of over 250 people working in construction and more than 1,100 students, job-seekers, and people employed in other industries in the U.S.

[Register to join the conversation!](#)

New Date for Elevate 2025 Announced

Elevate 2025 will now be held in early September at the National Building Museum. The event will discuss the built environment workforce shortage and its impact on national security. [Stay tuned for more updates here.](#)

Dodge Survey

To help the industry advance, NIBS has partnered with Dodge Construction Network, Autodesk, Esri, and Trimble on research that will quantify the state of technology use by owners in the construction industry.

This essential research will:

1. Track digital transformation progress and identify knowledge gaps across the AEC industry
2. Generate actionable insights for owners and key stakeholders
3. Reveal opportunities and challenges to guide strategic decision-making

Survey results will be published this spring.

[Learn more.](#)

Columns

A Message from Anne Law, SVP, Professional and Government Affairs

Less than 100 Days into President Trump's 2nd Term

President Donald J. Trump took his oath as the 47th President on January 20th, 2025. In less than 100 days, he has signed over 93 Executive Orders & actions aimed at keeping the promises he made to the American people on the campaign trail and reshaping the federal government at a dizzying breakneck speed in what some of his closest advisors have called 'shock and awe' meant to overwhelm opponents, disrupt the establishment, and bust traditional norms at home and on the world stage.

One of President Trump's most consequential moves has been the establishment of the Department of Government Efficiency (DOGE), allowing his Senior Advisor and world's richest man, Elon Musk, to head the effort to reform the federal bureaucracy and root out 'waste, fraud, and abuse' within the federal government. Actions by DOGE have already led to the layoff of thousands of federal workers, excluding the reported 77,000 who took the Administration's 'fork in the road' resignation offer. DOGE has also helped dismantle entire federal agencies seemingly overnight, including the United States Agency for International Development, Consumer Financial Protection Bureau, and most recently, the Department of Education.

Amidst these changes in Washington, DC, NIBS has launched into its next 50 years with a renewed focus on the public interest & a commitment to strengthening our built environment. We plan to work with Congress and the Trump administration where we can to advance solutions to the pressing challenges that put public safety at risk through the NIBS Legislative Agenda, which focuses on the following overarching categories:

Safeguarding Lifeline Infrastructure and Accelerating Functional Recovery

Natural and man-made disasters, from storm events to wildfires, have become more frequent and devastating. Safeguarding lifeline services and accelerating the functional recovery of impacted lifeline infrastructure is critical. We must ensure the nation's design standards account for the entire built environment, including lifeline infrastructure.

Addressing the Workforce Crisis

Our nation lacks sufficient personnel to build and maintain our bridges, hospitals, data centers, utilities, and other critical infrastructure, rendering the workforce shortage more than an industry challenge but a national security issue. This gap in the workforce has reached a critical level that requires the significant and meaningful participation of women, who make up approximately 51% of our population but only 10.9% of all workers in the construction industry in 2021, to bridge this vast workforce shortage. More women must be recruited, trained, and retained to address this shortage collaboratively across the entire built environment, from material production to design, construction, installation, commissioning, maintenance, operations, retirement, and renewal.

Streamlining the Adoption of Emerging Technology

The streamlined adoption of emerging technology can help alleviate these strains and enhance productivity. Adopting codes, standards, and regulatory consistency for these new technologies, like modular construction and the use of digital twins, will help protect the public interest.

Most recently, NIBS staff attended the House of Representatives Homeland Security Subcommittee on Emergency Management and Technology hearing, "Future of FEMA: Perspectives from the Emergency Management

Community,” where Daniel Kaniewski, Chair of the NIBS Committee on Finance, Insurance, and Real Estate, testified. NIBS also submitted a testimony for the record, which emphasized the need to build more resilient structures, lifelines, and communities to protect lives and reduce economic losses as well as the cost savings of investing in mitigation—for every dollar invested in resilience, there is a \$6 saved in future disaster costs avoided.



Moving Forward Report Preview

The NIBS Consultative Council is comprised of high-level building community leaders who make collective recommendations directly to policymakers on how to improve our nation’s buildings and infrastructure. Members of the Council include organizations representing consumers, architects, engineers, standards-setting bodies, government officials, contractors, researchers, and housing officials.

The goals of the Council are three-fold:

- Convening Thought Leaders: Bringing together industry leaders and experts across the built environment to improve our nation’s infrastructure and buildings.
- Identifying Challenges: Maximizing the collective knowledge of our experts to identify current and emerging key issues they believe will face the industry in the year ahead.
- Finding Solutions: Developing and publishing a yearly report that offers solutions to key challenges the built environment faces.

Each year, the Consultative Council publishes the Moving Forward Report to investigate critical challenges facing the building industry and make recommendations to both industry and policymakers to help overcome those challenges. These reports provide a reference point on the state of the industry at a specific time.

The 2025 Moving Forward Report will focus on Retrofitting for Resilience. The imperative to proactively prepare for natural and man-made hazards is clear in the wake of destructive hurricanes, wildfires, earthquakes, tornadoes, droughts, hailstorms, and floods. While the cost to retrofit buildings and infrastructure to mitigate the financial, physical, and emotional toll of these disasters varies widely, the benefits are clear. For every building type, commercial business owners, homeowners, communities, insurance companies, healthcare facilities, schools, and government agencies--can take steps to increase resilience. These actions will result in less economic disruption and ultimately save lives and money.

The report with full policy recommendations will be released in advance of NIBS’ 2025 Building Innovation Conference which focuses on Resilience.

Subject Matter Experts Share the Latest NIBS Insights

The NIBS blog recently highlighted new articles from technical subject matter experts. In January, Adham Naiem, NIBS Senior Project Manager, shared [an engineer’s perspective](#) on shaping resilience through policy and practice. In February, Anne Law, NIBS Sr. Vice President, Professional and Government Affairs, published a piece on the [built environment workforce shortage](#) and its effect on national security.

Each month, these articles will share the latest insights from NIBS experts. [Stay tuned on the blog.](#)

Observances & Events

April - World Landscape Architecture Month

April - National Volunteer Month

April - National Rebuilding Month

April 12-20 - Passover

April 2 - [The Future of Work: Leveraging Technology for Business Growth](#)

April 22 - Earth Day

April 24 - [Cognitive Digital Twins: A Roadmap for Evolving Operations and Maintenance in the Age of AI](#)

April 27 - National Rebuilding Day

May - Building Safety Month

May - National Electrical Safety Month

May - National Water Safety Month

May - Asian American and Pacific Islander Heritage Month

May 5-9 - Construction Safety Week

May 8 - [Addressing Workforce Shortages: How Can the Construction Industry Attract More Workers?](#)

May 13 - [Optimizing Asset Definition and Structure for Enabling Digital Twins](#)

May 19-21 - [Building Innovation 2025](#)

May 26 - Memorial Day

June - National Safety Month

June - Pride Month

June 5- [Bioclimatic Skin for Future Environment](#)

June 10 - [Singularity Unveiled: Exploring the Future of Spatial Computing and Digital Twins](#)

June 19 - Juneteenth

Find Us Online

An Engineer's Perspective: Shaping Resilient Systems through Policy and Practice

[Read More >>](#)

Why the Built Environment Workforce Shortage is a Threat to National Security

[Read More >>](#)

Survey: Technology Adoption Across Construction and Building Owners

[Read More >>](#)

**CxENERGY 2025**
CONFERENCE & EXPO ■ APRIL 28 ■ MAY 01, 2025 ■ CHARLOTTE, NC

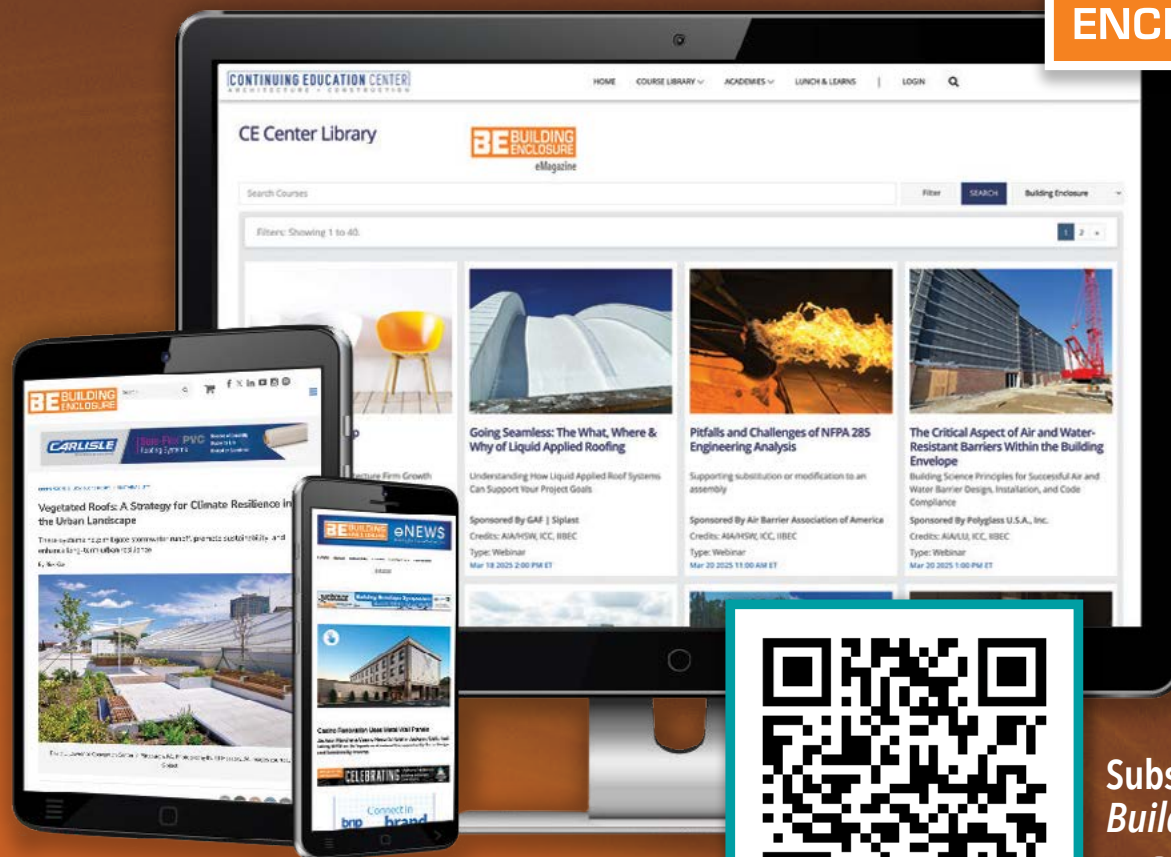
**The #1 Conference & Expo in
Commissioning, Energy
Management, & Building
Technology!**



COMMISSIONING | ENERGY MANAGEMENT | BUILDING TECHNOLOGY

Register Today
www.CxEnergy.com

Stay connected with



Subscribe to
Building Enclosure
FOR FREE!

WHY THE PROFESSION TRUSTS *BUILDING ENCLOSURE*:

- Expert-driven advice and insight that helps professionals execute projects
- Access to valuable information which allows businesses to keep their finger on the pulse of an always-evolving industry, and stay ahead of their competitors
- The latest information on new technologies and products that can help improve the outcome of projects
- Free Continuing Education courses that allow professionals to earn AIA/ HSW, AIA/LU, ICC, and IIBEC credits

BUILDING ENCLOSURE COVERS INFORMATION RELATED TO:

- Low & Pitched Roofs
- Metal Roofing Materials
- Waterproofing
- Sustainability
- Insulation
- Exterior Claddings
- Wall Systems
- Building Envelope

GETTING TO
zero
FORUM

April 22-24, 2025
Los Angeles, CA

Register today for the 2025 Getting to Zero Forum.

Join the movement to make buildings better
for people, communities, and the planet.

Featuring keynotes by:



Gene Rodrigues
Former Assistant
Secretary of Energy
U.S. Department of Energy



Angela Son
Founder & Chief
Executive Officer
The Green Launchpad



Nurit Katz
Chief Sustainability Officer
UCLA

Learn more at: bit.ly/2025GTZForumProgram