



QUARTERLY **CONNECTION**

A NIBS MEMBER NEWSLETTER

APRIL 14, 2020

TOPICS INSIDE

- **PAGE 1-2** COVID-19 UPDATES
- **PAGE 2** OBSERVANCES
- **PAGE 3-5** NIBS IN THE NEWS
- **PAGE 6** NIBS BLOG HIGHLIGHTS
- **PAGE 6-8** FEATURE STORY
- **PAGE 9** UPCOMING EVENTS

NIBS.ORG

NEWS HIGHLIGHT

National Institute of Building Sciences Offers COVID-19 Resource Portal for the Built Environment

(WASHINGTON, DC, April 7, 2020) – The National Institute of Building Sciences today launches a new portal, that’s aimed at answering questions around COVID-19, to serve the building industry.

The Building Industry COVID-19 Resource Hub is housed on the Whole Building Design Guide site. Coronavirus-related updates include recent developments, financial assistance information, webinars and events, continuing education, and other impacts of the coronavirus on the building sector. The hub regularly will be updated as new information becomes available.



BUILDING SAFETY MONTH 2020
SAFER Buildings,
SAFER Communities,
SAFER World

INDUSTRY OBSERVANCES

- April: World Landscape Architecture Month
- April: National Volunteer Month
- April 22: Earth Day
- April 25: National Rebuilding Day
- May: Building Safety Month
- May: National Electrical Safety Month
- May: National Water Safety Month
- First week of May: North American Occupational Safety and Health (NAOSH) week
- June: National Safety Month

“This is a centralized collection of information about how the building industry is addressing COVID-19,” said Lakisha A. Woods, President & CEO of NIBS. “There are so many questions out there, and we wanted to put together a living compendium of cross-disciplinary resources. We’re looking at the whole of the industry and not leaving any stone unturned.”

The NIBS project management team is personally curating the site. Individuals, organizations, or firms that wish to submit a news item can do so on the Whole Building Design Guide website wbdg.org.

WBDG is the largest repository of building information. It’s a comprehensive, web-based portal to a range of federal- and private-sector building-related guidance criteria and technology. It links information across professional disciplines to encourage integrated thinking and “whole building” performance. WBDG features a library of more than 12,000 design criteria, construction documents, and executable programs from federal and private organizations.



[Visit the WBDG Building Industry COVID-19 Resource Page>>](#)

INDUSTRY CONNECTIONS

GREENBUILD



NIBS President & CEO, Lakisha Ann Woods, and Barack Obama, who covered sustainability and affordability in his keynote, at Greenbuild.

NIBS IN THE NEWS

FCW

STATE LOOKS TO THE CLOUD FOR BUILDING MANAGEMENT SERVICES

The State Department is considering a new commercial software-as-a-service platform to support building management capabilities for thousands of its properties worldwide. [READ MORE>>](#)

AMERICAN SECURITY TODAY

FEMA STRENGTHENS CONSTRUCTION STANDARDS FOR DISASTER RECOVERY

The Federal Emergency Management Agency (FEMA) has released an update to its Recovery Interim Policy FP-104-009-11, Consensus-Based Codes, Specifications and Standards for Public Assistance (Policy), Version 2.1, adding several International Codes (I-Codes), developed by the International Code Council (ICC), to the list of required Consensus-Based Codes, Specifications and Standards.

[READ MORE>>](#)

FOR CONSTRUCTION PROS

PCA CAMPAIGN RAISING AWARENESS OF SUSTAINABILITY, RESILIENCY AND DURABILITY OF CONCRETE

The Portland Cement Association (PCA) is launching Shaped by Concrete, a new educational campaign to increase awareness of the sustainability, resiliency and durability of concrete made with cement. The campaign will feature stories based on these themes, exploring how these construction materials shape the world around us to make our communities, cities and country better.

[READ MORE>>](#)

CONSTRUCTION EQUIPMENT GUIDE

PROTECTING INFRASTRUCTURE FROM NATURAL DISASTERS

Every year, natural disasters threaten infrastructure and human life. The greatest damage (measured in repair dollars) is caused by storms. It is not only the high winds of thunderstorms, but rain and hail that cause the damage.

[READ MORE>>](#)

INDUSTRY CONNECTIONS

NIBS BOARD MEETING: JANUARY 29-30



Thank you to our dedicated board members, who met in Orlando at the end of January. Your commitment to finding solutions for the built environment is incredible.

THE WEEK

'MOPS AND BUCKETS' WON'T DO ANYTHING TO SAVE US FROM CLIMATE DISASTER

Hurricane Sandy brought a 14-foot tide of water through the streets of New York City and devastation along the coast of New Jersey in 2012. Over 50 people were killed. FEMA estimated a cost of \$70.2 billion, making it at the time the second costliest hurricane in U.S. history. In the seven years since, the recovery has progressed slowly. Many homeowners have struggled to navigate a complex and inadequate system of government aid and insurance money. [READ MORE>>](#)

GOVERNMENT EXECUTIVE

WHY SO MANY ARCHITECTS ARE ANGERED BY 'MAKING FEDERAL BUILDINGS BEAUTIFUL AGAIN'

Decades of federal architectural policy would be upended if the Trump administration follows through on an executive order that was leaked to the Architectural Record on Feb. 4. [READ MORE>>](#)

INDUSTRY CONNECTIONS

INTERNATIONAL BUILDERS SHOW: JANUARY 21-23



NIBS President & CEO, Lakisha Ann Woods, discussing affordable housing with Boxabl at IBS2020.

INDUSTRY CONNECTIONS

PORT OF ENTRY VISIT: FEBRUARY 3



NIBS and the U.S. General Services Administration's Post Occupancy Evaluation team visited the Marcelino Serna Land Port of Entry in El Paso, kicking off the third year of federal building post occupancy evaluations.

THE MANILA TIMES

ADAPTIVE ARCHITECTURE AND PLANNING

The Philippines is one of the world's most vulnerable countries to disaster. A study jointly conducted by the United Nations Office for Disaster Risk Reduction and the Center on the Epidemiology of Disaster ranked the Philippines as the fourth most disaster-prone country in the world. [READ MORE>>](#)

NY DAILY NEWS

DOWNSTATE N.Y. NEEDS ITS FAIR SHARE OF THE RESTORE MOTHER NATURE BOND ACT

People who live and work in Hunts Point, a South Bronx peninsula that's home to New York's largest food distribution center, or in Sunset Park, a Brooklyn waterfront neighborhood that doubles as the city's largest Significant Maritime and Industrial Area, have never stopped worrying about rising waters since Hurricane Sandy roared up the East Coast in 2012. And yet, these communities — just two of many neighborhoods at the frontlines of climate change in New York City — are just as vulnerable as they ever were to flooding. [READ MORE>>](#)

INDUSTRY CONNECTIONS

2020 CEO MEETING OF CESSE: FEBRUARY 11



President & CEO, Lakisha Ann Woods, participated in a panel on Engaging Members Across the Generations at CESSE's 2020 CEO Meeting.

INDUSTRY CONNECTIONS

NIBS MEETS WITH THE INSURANCE INFORMATION INSTITUTE: FEBRUARY 11



Great meeting between NIBS Multi-Hazard Mitigation Exec Director Jiqiu Yuan and Jim Lynch, with the Insurance Information Institute, to discuss possible collaboration on resilience, insurance, and outreach projects.

THE GAZETTE

THE NEW, ECOLOGICALLY RESPONSIBLE HOME IS ALSO BEAUTIFUL WITH HIGH PERFORMANCE STRUCTURES

Martine Vogel of Open Range Construction becomes animated when talking about the sustainability of the stunning home we're walking through on a chilly February afternoon. I nearly wiped out on my way down the driveway, not because I stepped on a patch of ice but because the wind was so strong, it nearly toppled me. But as Martine and I stood in the center of the soaring great room, surrounded by certified, Energy Star windows, you could not hear even a breath of the wind that was howling along the Black Forest prairie right outside.

[READ MORE>>](#)

June 24, 2020

BSSC Symposium: The 2020 NEHRP Recommended Seismic Provisions for New Buildings and Other Structures

Learn more about the recommended changes to ASCE/SEI 7-16 Minimum Design Loads and Associated Criteria for Buildings and Other Structures.

[Register Now](#)

Operating in today's new "normal" – what you need to know

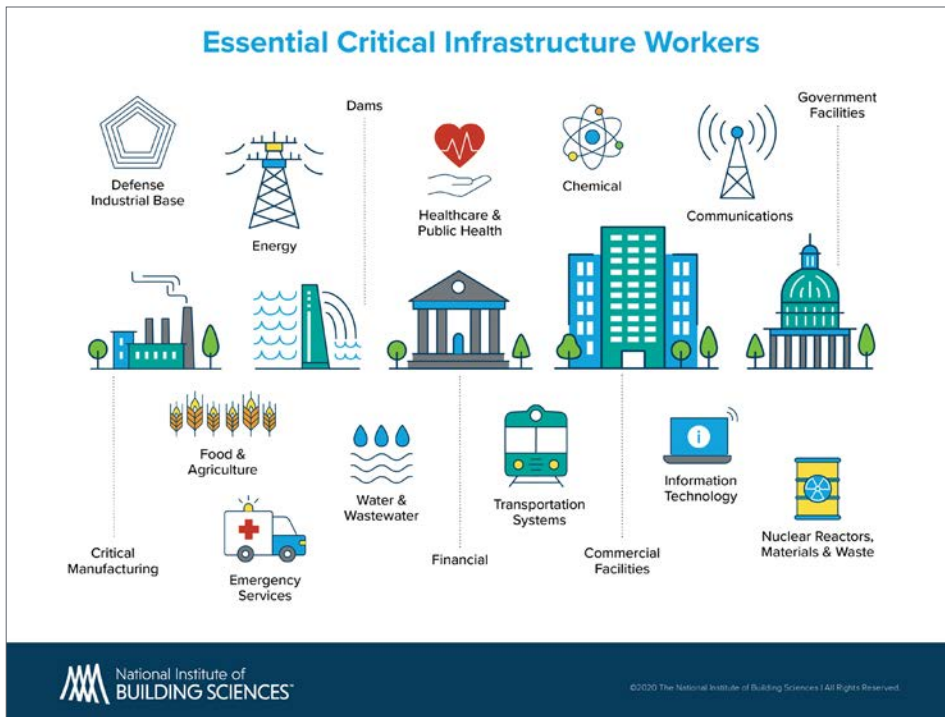
All eyes are on the COVID-19 situation, watching things unfold.

According to the Centers for Disease Control and Prevention (CDC), different parts of the country are seeing different levels of COVID-19 activity.

“The duration and severity of each pandemic phase can vary depending on the characteristics of the virus and the public health response,” the CDC reports, on its situation summary.

The National Institute of Building Sciences continues to closely monitor the situation, particularly as it relates to the built environment and how it affects the industry and our people. Our chief concerns are those affected – those in self-quarantine, the health care and law enforcement officials on the front lines, critical infrastructure trades officials who must report to work to keep things running smoothly, the businesses whose operations must cease, and the children and students whose institutions have closed.

NIBS will continue to bring experts to the table, as we grapple with this new reality and face head-on what's needed as it relates to off-site construction and any other resources needed to keep the built environment safe, healthy, and sustainable.



FIND US ONLINE

WORLD WATER DAY: IT'S IMPORTANT TO CONSIDER THE ROLE OF INFRASTRUCTURE.
[READ MORE>>](#)

#1WD2020: CELEBRATING WOMEN'S ACHIEVEMENT AND RAISING AWARENESS ABOUT CONTINUED BIAS
[READ MORE>>](#)

IT'S #GIRLDAY2020 – A DAY TO RECOGNIZE THAT INSPIRATION IN STEM STARTS EARLY
[READ MORE>>](#)

DELL TECHNOLOGIES NAMED EXCLUSIVE TECHNOLOGY DAY SPONSOR FOR BUILDING INNOVATION 2020
[READ MORE>>](#)

NIBS AND GSA KICK OFF THIRD YEAR OF FEDERAL BUILDING POST OCCUPANCY EVALUATIONS
[READ MORE>>](#)

"I'D LIKE TO ATTEND BUILDING INNOVATION 2020. WILL I EARN AIA AND ICC CREDITS?" THE ANSWER IS YES!
[READ MORE>>](#)

 [@BLDGSCIENCES FOLLOW>>](#)
 [@BLDGSCIENCES FOLLOW>>](#)
 [LINKEDIN FOLLOW>>](#)



WHO'S CONSIDERED CRITICAL INFRASTRUCTURE DURING THIS TIME?

There are 16 critical infrastructure sectors whose assets and systems are considered so vital to the U.S. that their incapacitation or destruction would have a debilitating effect on security, national economic security, public health, or safety.

The U.S. Department of Homeland Security Cybersecurity & Infrastructure Security Agency (CISA) identifies these sectors as chemical, commercial facilities, communications, critical manufacturing, dams, defense industrial base, emergency services, and energy, among others.

Bloomberg has reported how power and gas utilities are keeping energy flowing. For example, there's no working from home for control room staff, who must physically be present to keep systems operating.

Even The Hill reported that the U.S. power industry may ask essential staff to sleep on site, as the coronavirus outbreak continues to grow.

"Electric power plants are considered 'critical infrastructure' by the federal government, meaning as local and state governments impose shutdowns, they will still have to go to work," the Hill reports.

Industry trade groups and electric cooperatives have said that companies are stockpiling beds, blankets, and food for those employees.

ALSO CRITICAL: WATER AND WASTEWATER SYSTEMS

Safe drinking water is a prerequisite for protecting public health and all human activity, says CISA.

"Properly treated wastewater is vital for preventing disease and protecting the environment," it says. "Thus, ensuring the supply of drinking water and wastewater treatment and service is essential to modern life and the nation's economy."

The International Association of Plumbing and Mechanical Officials recognizes the announcement that plumbers fall into the category of "essential critical infrastructure workers."

In an initial list of critical infrastructure workers, CISA Director Christopher C. Krebs said these folks would help "state and local officials as they work to protect their communities, while ensuring continuity of functions critical to public health and safety, as well as economic and national security."

There are approximately 153,000 public drinking water systems and more than 16,000 publicly owned wastewater treatment systems in the United States, according to CISA. More than 80 percent of the U.S. population receives their potable water from these drinking water systems, and about 75 percent of the U.S. population has its sanitary sewerage treated by these wastewater systems.

ARE THERE SMALL BUSINESS LOANS AVAILABLE?

The answer is yes.

The U.S. Small Business Administration provides low-interest disaster loans to help businesses and homeowners recover from declared disasters.

In response to the COVID-19 pandemic, small business owners in all U.S. states, Washington D.C., and territories are eligible to apply for an Economic Injury Disaster Loan advance of up to \$10,000.

SBA's Economic Injury Disaster Loans offer up to \$2 million in assistance and can provide vital support to small businesses to help overcome the temporary loss of revenue. Funds will be made available within three days of a successful application, and this loan advance will not have to be repaid.

There's also the Paycheck Protection Program, which prioritizes millions of Americans employed by small businesses by authorizing up to \$349 billion toward job retention and certain other expenses.

Small businesses and eligible nonprofit organizations, Veterans organizations, and Tribal businesses described in the Small Business Act, as well as individuals who are self-employed or are independent contractors, are eligible if they also meet program size standards.

Under this program, eligible recipients may qualify for a loan up to \$10 million determined by 8 weeks of prior average payroll plus an additional 25% of that amount. Loan payments will be deferred for 6 months.

NONPROFITS ELIGIBLE FOR FINANCIAL HELP

A coalition of 40 of the nation's largest charities asked lawmakers for \$60 billion in COVID-19 pandemic relief and economic stimulus, The NonProfit Times reports.

On March 27, the Coronavirus Aid, Relief, and Economic Security Act (CARES Act) was passed by Congress, and it

INDUSTRY CONNECTIONS

HUD PANEL



Team member Jiqiu Yuan participated in a @HUDgov panel, "An Exploratory Study of Factory-Built Homes and the Implications for #Affordability." Grateful for this opportunity. #housing

included a universal charitable deduction as part of the COVID-19 stimulus relief.

This creates a new above-the-line deduction that applies to all taxpayers for total charitable contributions of up to \$300, The NonProfit Times reports. The incentive applies to donations made in 2020 and would be claimed on tax forms next year.

"Nonprofits with fewer than 500 employees will be eligible for \$10 million in Emergency Small Business Loans (emergency SBA 7(a) loans)," the Times reports. "The loans can cover costs of payroll, operations, and debt service, and provides that loans be forgiven in whole or in part under certain circumstances, according to guidance from the National Council of Nonprofits. The loans would be eligible to be turned into grants."

NIBS will continue to bring experts to the table, as we grapple with this new reality and face head-on what's needed as it relates to off-site construction and any other resources needed to keep the built environment safe, healthy, and sustainable.

We will continue to stay on top of this story. For more information, visit <https://www.nibs.org/>. You can also follow us @bldgsciences on Twitter or on Facebook.

[VIEW STORY ON NIBS.ORG>>](https://www.nibs.org/)

UPCOMING EVENTS

- June 24, 2020: [BSSC Symposium](#), San Francisco, CA
- August 16-19, 2020: [Building Innovation 2020](#), Arlington, VA
- September 23-24, 2020: [Women Executives in Building Summit](#), Nashville, TN

BI2020 UPDATES

The leadership of the National Institute of Building Sciences has made the decision to move the Building Innovation Conference scheduled for April 6-9, 2020, to later in the year. This change was required after thorough review of the growing challenges related to COVID-19. The health and safety of our members, attendees and staff is our top priority. We look forward to seeing you in August!

[REGISTER NOW>>](#)

INDUSTRY CONNECTIONS

CURT National Conference



NIBS' Roger Grant and Kimon Onuma, represent NIBS at the CURT National Conference in Chandler, Ariz. The team presented on treating data as an asset for the facility lifecycle.



National Institute of Building Sciences
BUILDING INNOVATION
Conference and Expo

August 16-19, 2020
Arlington, VA



RESILIENCE



TECHNOLOGY



WORKFORCE

Register now at buildinginnovation.org